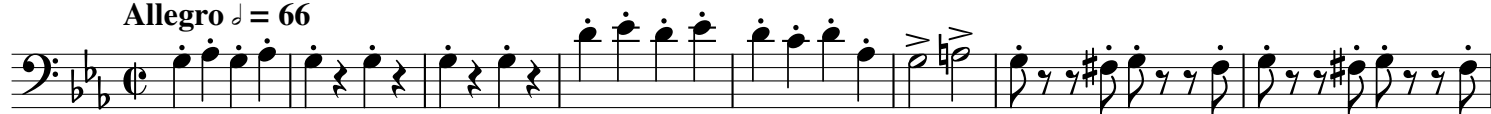


Tenor Trombone 2 Academic Festival Overture

for Gail Williams

Johannes Brahms, Op. 80/arr. Daniel Chevallier

Allegro $\text{♩} = 66$



pp *sempre e sotto voce*

9



pp

15



pp

p cresc.

44



f *ben marcato*

p

pp

53



p dolce

79



cresc. poco a poco

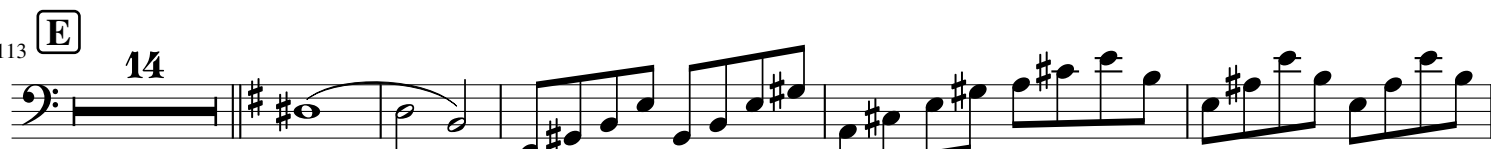
L'istesso tempo, un poco maestoso

ff

91



113



p

mf

sempre quasi pizz.

132



136 **F**

141 **2** $< >$ $< >$ p

151 **Animato** p *dolce* 3 3

160

173 **ff**

184 **G** **H** **13** **5** p dim.

216 p $<$ p cresc. **ff**

232

241 **ff** **5** **3** **7**

251 **I** **4** p mezza voce $<$ $>$ *dim.*

264

p <> *f*

7 [K]

280

p <> *f*

285

p <> *f*

292

ff *p* < *p*

12 [L]

315

mp espr. <>

7 [M]

329

p dolce <>

7

345

p *ff*

8

368

sf *sf*

379 **Maestoso** (♩ = ♩)

sf *sf*

385

sf *sf*

392

